



REinforcing Science-Policy Interfaces for integrated biodiversity and climate knowledge and policies

Context

IPBES and IPCC, along with national processes, were established to enhance the science-policy interface (SPI) between knowledge holders and decision-makers for global biodiversity and climate protection. Despite thematic and procedural overlaps, knowledge systems on climate and biodiversity remain fragmented, and there are significant differences in countries' capacities and experiences in supporting and engaging in these processes. RESPIN aims to evaluate and process existing experiences to provide guidance and inspiration for SPI development. By assessing potentials and barriers, the project seeks to foster SPI processes around biodiversity and climate change, improving access to information for decisions at the EU, national, and subnational levels.

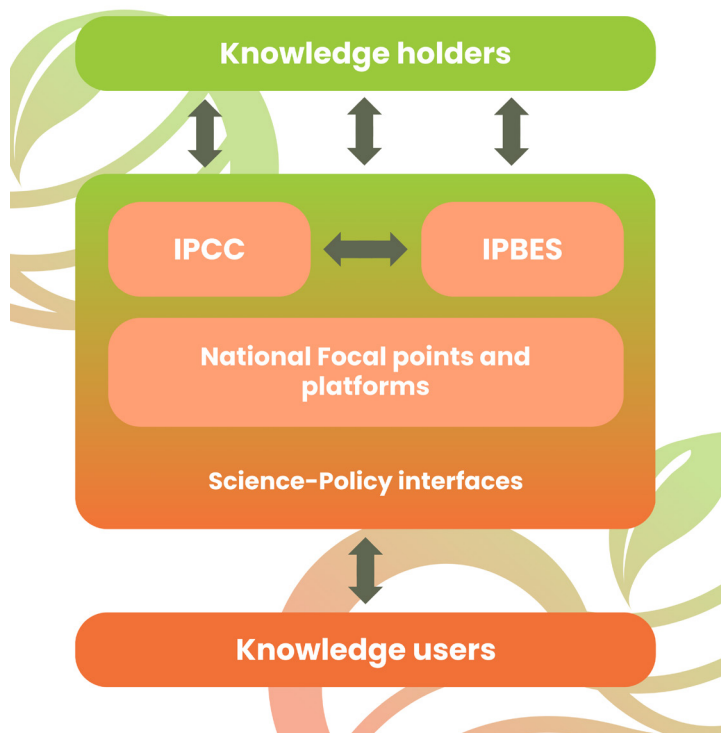
Duration

4 years, 3 funding phases,
January 2024 – January 2027

About the project

RESPIN is closely tied to IPBES and IPCC, focusing on enhancing the SPI for biodiversity and climate protection. The project evaluates existing experiences, empowers knowledge holders, and facilitates the uptake of IPBES and IPCC knowledge by decision-makers globally. By developing new SPI formats and collaborating with strategic partners, RESPIN ensures integrated processes aligned with IPBES objectives.

The project aims to empower knowledge holders by enhancing representation across regions, knowledge systems, and stakeholder groups in SPI processes, considering the interlinkages between biodiversity and climate. Additionally, RESPIN empowers decision-makers globally to uptake the knowledge and capacity building provided by IPBES and IPCC. The project also develops future perspectives for SPI engagement at the EU level, enhancing EU capacities to incorporate IPBES and IPCC functions into their knowledge procedures and funding provisions. Further, RESPIN develops and disseminates online capacity building programs to scale up best practices and translate relevant project outputs for key stakeholders and decision-makers worldwide.



The 5 functions of the project

FUNCTION 1

enhances the participation of diverse knowledge holders in IPBES and IPCC by assessing engagement levels, improving capacity-building activities, and fostering long-term collaboration.

FUNCTION 2

identifies gaps and barriers in using IPBES and IPCC findings across various levels, aiming to improve data integration, policy coherence, and collaboration between climate and biodiversity efforts.

FUNCTION 3

integrates IPBES and IPCC findings into EU decision-making, enhances policy coherence, develops private sector engagement formats, and supports EU delegations in international negotiations.

FUNCTION 4

raises awareness of IPBES and IPCC processes by translating findings into accessible resources, developing training courses, establishing a collaborative platform, and fostering strategic partnerships for effective outreach and dissemination.

FUNCTION 5

ensures coordination and synergy among project activities through regular meetings, a steering committee, and an Advisory Board, providing complementary reports and recommendations to key partners and remaining adaptable to future developments.

Consortium

The RESPIN consortium is comprised of 11 partners from **10 countries** across **Europe, Latin America, and Africa**. It brings together key experts from diverse realms of knowledge – from biodiversity and ecology, to climate modelers and economists, social scientists and communication experts.

Partners

- **Helmholtz Centre for Environmental Research** (UFZ), Germany
- **Service Public Fédéral de Programmation Politique Scientifique** (Belspo), Belgium
- **Fondation Pour la Recherche Sur la Biodiversité** (FRB), France
- **Centre for Ecological Research** (HUN-REN CER), Hungary
- **Finnish Environment Institute** (Syke), Finland
- **Centro de Investigación en Ecología y Aplicaciones Forestales** (CREAF), Spain
- **CoKnow Consulting**, Germany
- **Instituto de Investigación de Recursos Biológicos Alexander von Humboldt** (Humboldt), Colombia
- **Pensoft Publishers** (PENSOFT), Bulgaria
- **Université de Lubumbashi** (UNILU), Democratic Republic of Congo
- **UN Environment Programme World Conservation Monitoring Centre** (UNEP-WCMC), Cambridge (Associated partner)

Project coordinator

Dr. Yves Zinngrebe

Environmental policy expert, Research fellow in the Department of Conservation Biology and Social-Ecological Systems, UFZ



**Funded by
the European Union**

This project receives funding from the European Union's Horizon Europe research and innovation programme under grant agreement No. 101135490. Views and opinions expressed are those of the author(s) only and do not necessarily reflect those of the European Union or the European Research Executive Agency (REA). Neither the EU nor the REA can be held responsible for them.