



REINFORCING SCIENCE-POLICY INTERFACES FOR INTEGRATED BIODIVERSITY AND CLIMATE KNOWLEDGE AND POLICIES



respin-project.eu



contact@respin-project.eu



RESPIN project



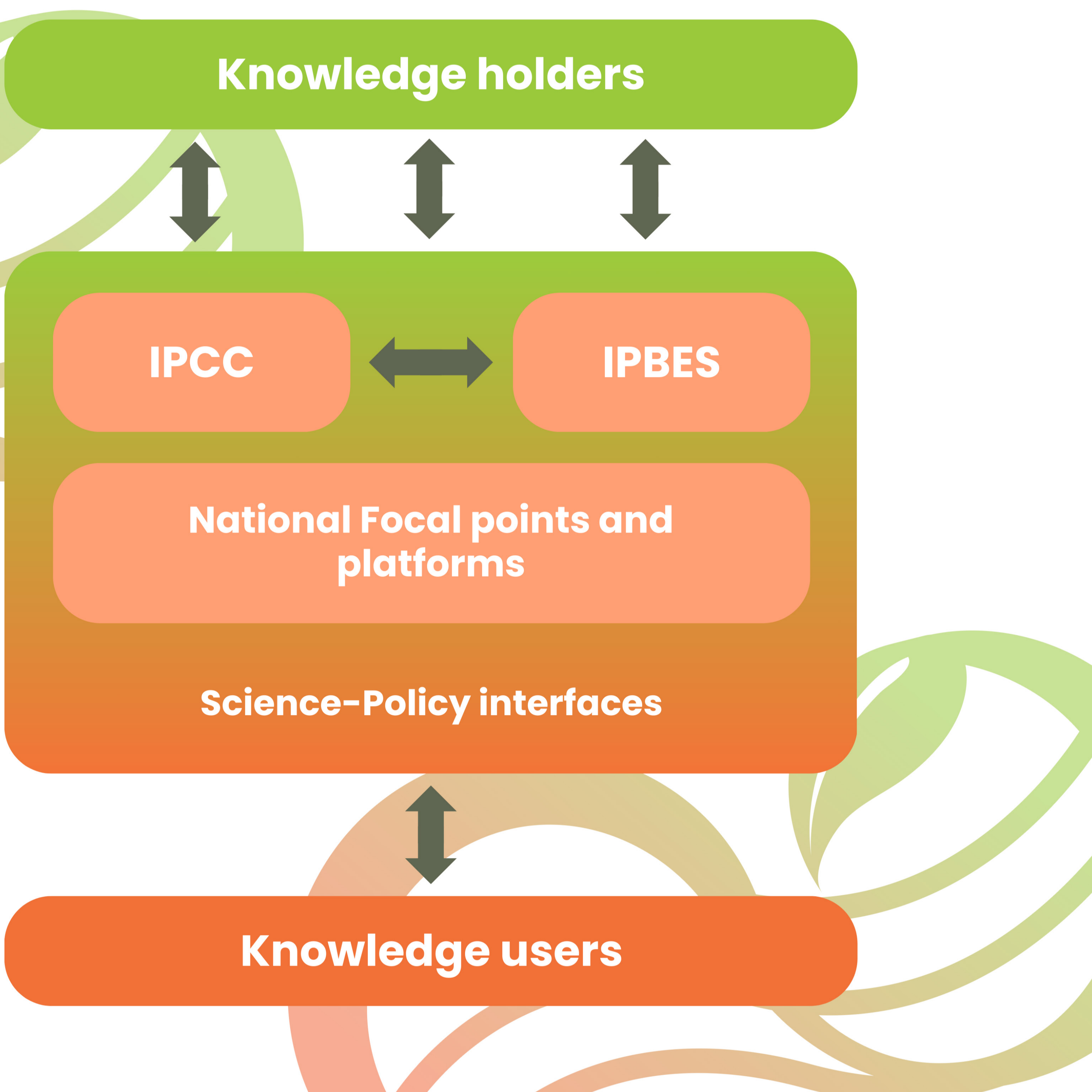
@RespinProject

Vision

Strengthen global decision-making by integrating and utilising knowledge from IPBES and IPCC processes, ensuring that all regions, especially underrepresented ones, benefit from enhanced networks, capacity and targeted information.

Mission

Identify knowledge gaps, enhance engagement with diverse knowledge holders, including in Central Africa, Central Asia, and Latin America, and support the uptake of IPBES and IPCC outputs in decision-making processes.



Project structure

The RESPIN project is structured into five functions, combining work packages to streamline workflow, focus on objectives, and enhance collaboration. The five functions are:

- F1 Empowering Knowledge Holders**
- F2 Empowering Knowledge Users**
- F3 Strengthening SPIs at the EU Level**
- F4 Upscaling and Communication**
- F5 Coordination and Consolidation**

The different functions aim to foster synergies both within the project and with related external expertise. Each function includes an analytical component to identify and assess existing knowledge and capacities. We are building regional networks of potential multipliers across Europe, Central Asia, Africa, and Latin America. These networks will have access to resources and training to amplify and scale RESPIN's efforts in achieving our Vision.



Funded by the European Union

This project receives funding from the European Union's Horizon Europe research and innovation programme under grant agreement No. 101135490. Views and opinions expressed are those of the author(s) only and do not necessarily reflect those of the European Union or the European Research Executive Agency (REA). Neither the EU nor the REA can be held responsible for them.

